



Type YSL-1, 2 Safety Valve (Low Lift Type)

Boiler

Heat Exchanger

Secondary Side of Pressure Reducing Valve

2

The type YSL can be commonly used for various types of fluid (steam, vapor, liquid). It has a simple structure and is made of materials with a superb level of corrosion resistance. It is a safety valve that can be used for various purposes, such as a pressure vessel, safety device for various instruments and equipment, hot water boiler, water (including hot water) supplying equipment, cooling and heating facility, and safety device of pressure reducing valves.

■ Features

- Simple structure and outstanding performance.
- Disc and seat are free from leakage or transformation issues, thanks to a precision machining process.
- Test lever attached : Periodical performance inspections can be conducted.
- Approval from the Korea Occupational Safety and Health Agency (KOSHA).

■ Specifications

Type	YSL-1	YSL-2
Test lever	Yes	No
Applicable fluid	Steam, air	water
Set pressure range	0.35~10kgf/cm ² g	
Fluid temperature	220° C below	
End connection	KS PT SCREW	
Materials	Body	GC200
	Disc, seat	STS
Hydraulic test pressure	15 kgf/cm ² g	



Type YSL-1



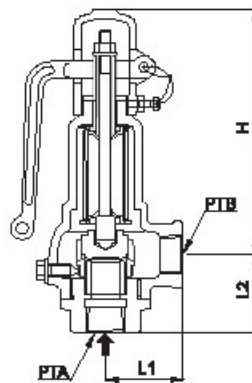
Type YSL-2

■ Dimensions

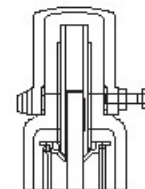
(mm)

Size	Seat diameter		Lift	Effective area (mm)		Face to Face		Height(h)		Connection size		Weight(kg)	
	D	φ		πD /	πD2/4	L1	L2	YSL-1	YSL-2	IN	OUT	YSL-1	YSL-2
15(1/2")X15(1/2")	15	0.4	18.8	176.6	40	41	127	112	1/2"	1/2"	1.1	1	
20(3/4")X20(3/4")	20	0.5	31.4	314	50	50	137	122	3/4"	3/4"	1.8	1.7	
25(1")X25(1")	25	0.7	54.9	490.8	55	60	162	148	1"	1"	3	2.9	
40(1 1/2")X40(1 1/2")	40	1.0	125.6	1256.6	70	75	230	216	1 1/2"	1 1/2"	6.4	6.1	
50(2")X50(2")	50	1.3	204.1	1963.5	80	80	245	245	2"	2"	9.3	9	

■ Dimensional drawing



Type YSL-1



Type YSL-2