

BKT-1S/1F | Bucket Type Steam Trap

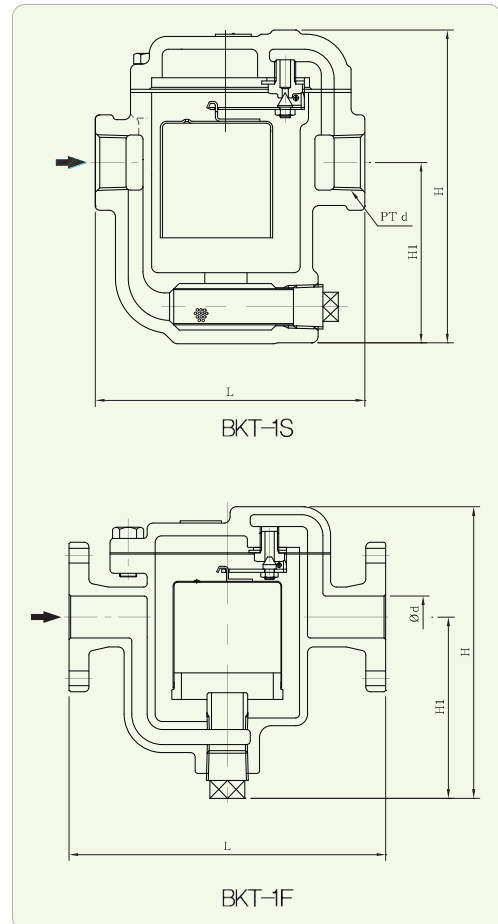
- It is an inverted type steam trap suitable for the heat exchangers, dryers and steam press, constructionally solving the air trouble by itself.
- All of the working parts are installed at the inside of the bonnet for easy disassembly and maintenance.



BKT-1S



BKT-1F



► Specifications

Working Pressure (kgf/cm ²)	Max. 8
	Min. 0,35
Working Temperature (°C)	220
Connection	BKT-1S : PT Screwed
	BKT-1F : JIS 10K Flanged
Materials	Body : Ductile Iron
	Trim : Stainless Steel

► Dimensions

Model	Size	d	L	H1	H	Connection
BKT-1S	15A	PT 1/2"	127	70	158	PT Screwed
	20A	PT 3/4"	127	70	158	
	25A	PT 1"	137	77	171	
	32A	PT 1 1/4"	190	190	280	
	40A	PT 1 1/2"	190	190	280	
BKT-1F	50A	PT 2"	240	200	300	JIS 10K Flanged
	32A	32	250	190	280	
	40A	40	250	190	280	
	50A	50	290	200	300	

